

CityLine

October-December 2018: *Special Events*

State of the City

Saturday, January 19, 2019 from 9-11am

Residents of Litchfield Park are invited to attend the State of the City to be held at The Church at Litchfield Park in Souers Hall, 300 N. Old Litchfield Road, on Saturday, January 19, 2019, from 9-11am. Registration begins at 8:30am. The Mayor, Council and Staff will present an update of the City of Litchfield Park's operations as well as current and future projects. Litchfield Park residents will have an opportunity to bring issues to the attention of City Officials, which, due to the Open Meeting Law, will be addressed at a later date. Don't miss this opportunity to learn about what is happening in your City. Light refreshments will be served.

Refuse and Recycling Containers

by Lynn Webb, Code Enforcement Officer

Please be reminded that City Code Section 9-2-2 item C states that when necessary to set trash and recycle containers at the front curb, they may be set out after 6pm of the day preceding regular collection and be removed from the curb by midnight of the day of collection. All containers shall be stored between collections so that they are not readily visible from the street. Please store your containers



in your garage or behind your fencing if possible. They may not be stored on the driveway or in the side yard of your home if they can be seen from the street.

Welcome New Neighbors

Shop Litchfield Park and support area businesses! Help sustain the local economy and maintain City programs and projects including parks, recreation, streets, and public safety. How? A portion of the retail tax from purchases you make at Litchfield Park businesses is a primary source of revenue for the City. Please extend a "Welcome!" to these new Litchfield Park businesses:

- Caliber Collision, *Monument Point*
12405 W Camelback Road
- Papa Paul's Brick Oven Pizza & Pasta, *Downtown District*
118 N Old Litchfield Road
- Teacup, *Wigwam Creek*
13000 W Indian School Road, Suite A-14
- Vein Envy, LLC, *La Loma Medical Building*
14044 W Camelback Road, Suite 226



A Message from Mayor Tom Schoaf



Shop Litchfield Park and support area businesses! When I first considered running for Mayor more than a decade ago, one of my friends reminded me of that sage advice that we have probably all heard before, “*Be careful what you wish for!*” At the time, it did not occur to me that I would serve as your Mayor for more than just a few years. Thank you for allowing me to continue as Mayor for another four years. These next four years will be critical for our City as we are actively working on two of the City’s most significant projects: the City Center Development and restoration of the Litchfield Homestead. These projects will complete the vision for our little City while establishing our shared lifestyle for many, many years. Will we be successful at crafting an interesting, vibrant City Center while protecting the quality of our neighborhoods and the beauty of our City? I hope we will learn the answer to this important question during the next four years. Thank you for the opportunity to be a part of these projects.

We are beginning our holiday season with another great lineup of Special Events. Our newly refurbished lake, with its new pumping system, is ready for a spectacular Winter Trout Fishing Derby. Get your fishing gear cleaned up and ready! We also are finalizing our Christmas in the Park festivities including one of the best small town parades and a day of family fun with real snow for kids big and small to enjoy. The City will once again sponsor an Outdoor Holiday Decorating Contest to highlight our many beautiful holiday themed homes. We hope you enjoy the upcoming festive season and then join us for the Saturday, January 19, 2019 State of the City presentation.

City Council and the City Staff are dedicated to making life in ‘the Park’ the best that it can be. We welcome your input at our meetings which are held the third Wednesday of each month at 7pm in the Library community room. You are also welcome to contact me at City Hall, 623-935-5033 or tschoaf@litchfield-park.org.

FREQUENTLY REQUESTED PHONE NUMBERS

Animal Control	602 506-7387	Goodyear Fire Customer Service	623 932-2300
APS (to report street light outages)	602 371-7171	Library (Litchfield Park)	602 652-3000
Bus (Valley Metro)	602 253-5000	Liberty Utilities (water & sewer) after 4:30pm call	623 935-9367 623 935-3395
Chamber of Commerce (Southwest Valley)	623 932-2260	Luke Air Force Base Information	623 856-1110
City Hall		New Life Center (women’s shelter)	623 932-4404
Administration/Clerk/City Manager	623 935-5033	Police (MCSO) Emergency	9-1-1
Building Department	623 935-1066	Non-Emergency	602 876-1011
Building Permits & Property Maintenance	623 935-1066	Recreation Center	623 935-9040
Court	623 935-7091	Southwest Gas Corporation	877 860-6020
Finance	623 935-4364	Waste Management	888 964-9780
Human Resources	623 935-4364	West Valley Arts Council	623 935-6384
Public Works/Field Operations	623 935-4356	West Valley View	623 535-8439
Cox Cable	602 277-1000		
Dust Control Violations	602 372-2703		

MAYOR & CITY COUNCIL MEMBERS

TOM SCHOAF, Mayor
tschoaf@litchfield-park.org

PAUL FAITH, Vice Mayor
pfaith@litchfield-park.org

TIM BLAKE, Council Member
tblake@litchfield-park.org

JOHN ROMACK, Council Member
jromack@litchfield-park.org

ANN DONAHUE, Council Member
adonahue@litchfield-park.org

PETER MAHONEY, Council Member
pmahoney@litchfield-park.org

JEFF RAIBLE, Council Member
jraible@litchfield-park.org

Seeking Applicants

by Chris Moffitt

Engaging citizens benefits government and the region and instills a sense of belonging. Here is your opportunity to become involved, knowledgeable, and a part of the process that improves the quality of life in your City.



The City is seeking applicants for the following advisory boards and commissions to the Council for term year commencing in March 2019:

- Design Review Board/Board of Adjustment
- Industrial Development Authority
- Planning and Zoning Commission
- Recreation and Public Grounds Commission

Applications are available at City Hall or can be printed from the City's website at litchfield-park.org > Live > Government > Boards & Commissions > Become a Commissioner > Boards and Commissions Membership Application. The website includes information regarding meeting times and a list of current members.

The deadline for submittal is Friday, January 18, 2019. Make the decision today to become involved, and discover the rewards of sharing your unique talents and experience with your City.

HOLIDAY OFFICE CLOSURES

**City Hall,
Magistrate Court &
Recreation Center**

Veterans Day

Monday, November 12, 2018

Thanksgiving Day

Thursday & Friday, November 22 & 23, 2018

Christmas Eve & Christmas Day

Monday & Tuesday, December 24 & 25, 2018

New Year's Day

Tuesday, January 1, 2019



2018 Flag Ceremonies

8:15am City Hall Front Lawn, Reception to follow

Marine Corps 243rd Birthday November 10

Flag Raising Ceremony: Friday, November 9

2019 Flag Ceremonies

8:15am City Hall Front Lawn, Reception to follow

Merchant Marine 81st Founder's Day March 15

Flag Raising Ceremony: Friday, March 15

US Army Day 244th Birthday June 14

Flag Raising Ceremony: Friday, June 14

US Coast Guard 229th Birthday August 4

Flag Raising Ceremony: Friday, August 2

US Air Force 72nd Birthday September 18

Flag Raising Ceremony: Wednesday, September 18

US Navy Day 244th Birthday October 13

Flag Raising Ceremony: Friday, October 11

Marine Corps 244th Birthday November 10

Flag Raising Ceremony: Friday, November 8



Don't Be a Clark Griswold! Holiday Home Safety Tips

by Mary Dickson, Chief Building Official



No one wants to think of bad things happening during the holiday season, but the US Consumer Protection Commission reports that there are some 14,000 injuries each year related to decorating the home.

- **Buy safe lights.** The lights you use should bear the marking of a safety testing laboratory. LEDs are a great choice as they are energy efficient and run cooler.

- **Check lights for damage before use.** Discard sets that have any exposed or frayed wires, cracked or broken bulbs, or any other damage, even if it is your favorite decoration!

Don't overlook other electrical appliances either. Check all electrical cords, especially those at power strips. If they feel warm to the touch, the strip or outlet may be overloaded. Be sure the total amount of energy used by appliances and lights plugged in to that outlet or power strip do not exceed its capacity.

Don't overlook gas appliances. Gas water heaters and furnaces need plenty of air to operate safely, otherwise they produce deadly carbon monoxide. Carbon Monoxide is odorless, colorless and toxic; which means you can't see, taste, or smell it. It causes headaches, dizziness, disorientation, nausea, and fatigue and can be deadly.

- Schedule an appliance check, cleaning and tune-up to ensure all your gas appliances are safe.
- Keep areas around these appliances free from combustible materials and don't block those air vents in your garage—they are there for a reason!
- If you don't have one already, install a carbon monoxide detector near each gas appliance and in the room that directly attaches to the garage.

Don't be a Clark Griswold! **Be smart, be safe** this holiday season by taking the time to check your gas appliances and electrical cords!

100 YEAR BEER FESTIVAL

November 17, 2018 | The Wigwam Blue Course

A special anniversary calls for a special event! Join us at **The Wigwam** for a beer festival as we celebrate the 100th anniversary of the first building on our property, the Organization House.

VIP Admission | 5:30-9:30pm
General Admission | 6:30-9:30pm

Purchase tickets from The Wigwam Front Desk or online at wigwamarizona.com

LIVE ENTERTAINMENT BY NINEBALL

PROCEEDS BENEFIT THE HONEY FOUNDATION

MUST BE 21+

FOOD SOLD SEPARATELY

623.935.3811 | wigwamarizona.com





'Tis the Season to Treecycle

Since the City does not provide curbside pickup for Christmas trees, residents may drop off their live Christmas trees for recycling beginning Wednesday, December 26, 2018, through Friday, January 11, 2019. Please adhere to the recycling guidelines: Remove all ornaments, garland and icicles from the tree; Do not place the tree in a plastic bag; Potted trees will not be accepted.

The drop-off site will be located east of Litchfield Park City Hall, 214 W Wigwam Boulevard. Signage will mark the designated area. If you have questions, contact Public Works at 623-935-1066, Ext 110.



LESD Commitment to Safety

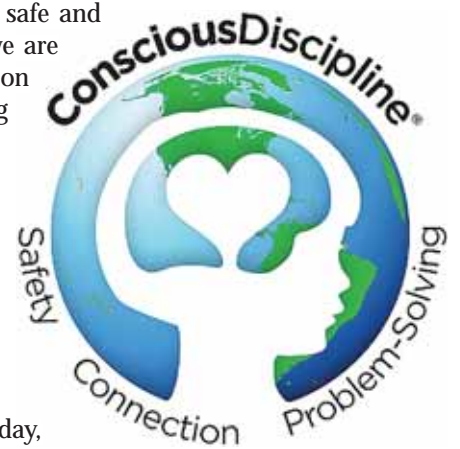
by Shelly Smith Hornback, Director of Community Relations

Student safety comes in many forms. From our closed campuses and strict student release procedures to sound athletic instruction and lessons on digital citizenship, student safety is a priority at every campus of the "A" rated Litchfield Elementary School District.

Our A+ teachers use a social-emotional framework called "Conscious Discipline" to create safe and engaging school families. By using brain research to foster strong emotional connections, we are building resilience in students, as well as preventing bullying and violence. Visit the "news" section at www.lesd.k12.az.us to learn about monthly Conscious Discipline training for all adults seeking no-cost opportunities to gain skills for themselves and the children they love.

Litchfield Elementary School District partners with City of Litchfield Park to ensure traffic safety for Litchfield Elementary School students, as well as residents. The District and the City are equally committed to ensuring that students get to and from school safely with as little inconvenience as possible to local drivers. Thanks to the generous support of Public Works, the new flashing light on Old Litchfield Road helps remind drivers to slow down when students are present. Principal Hopper continues to include traffic safety rules in school newsletters and messaging, including the expectation that parents always park and cross streets in designated areas only.

Thank you to all Litchfield Park residents that attended the annual Fall Carnival held on Friday, October 26, 2018. Eventgoers enjoyed food, musical performances, games, and prizes in support of the Parent Teacher Student Association.



2018 Holiday Home Decorating Contest

You're invited to light up the season! The City of Litchfield Park encourages residents to decorate their home exteriors with colorful lights, wreaths, scenery, and other decorative items during the holiday season. The contest is open to individuals living within the Litchfield Park city limits and who turn in their entry forms by Sunday, December 16, 2018.

Categories for judging include:

• Clark Griswold



• Norman Rockwell



• Inflatable Fun



Access Holiday Home Decorating Contest entry forms and category details on the City's website at litchfield-park.org. Entries may be emailed or hand delivered to City Hall, Monday through Friday, 8am-5pm. Winners will be notified by Wednesday, December 19, 2018. Winning homes in each category will receive a \$100 cash prize along with a decorative yard sign acknowledging them as the 2018 winners! Questions should be directed to Tricia at 623-935-9040 or at tkramer@litchfield-park.org. *Happy decorating!*



Special Events Calendar

2018-19 Community & Recreation Services

623-935-9040, litchfield-park.org

2018

November 3-4
Saturday & Sunday

Litchfield Park Festival of the Arts

Free festival on the Library Lawn and Downtown District. Held Saturday and Sunday from 9am-5pm. Fine art, live music, international food court, and more!

November 11
Sunday

Arts in the Park Outdoor Concert Series



Free "A Swingin' Salute to Veterans and the USA" concert featuring the Arizona Swing Kings on the front lawn of The Wigwam from 3-5pm.

December 8
Saturday

Christmas in the Park

Free holiday event on the Library Lawn and Downtown District from 9am-4pm. Craft vendors and food booths open at 9am; parade starts at 10am. Day includes real snow, kids' activities, visits with Santa, and live entertainment.

2019

January 12-13
Friday, Saturday,
Sunday

27th Invitational Litchfield Park Gathering – Native American Fine Arts Festival

Free event on the Library Lawn and Downtown District. This is a fine arts and cultural festival featuring approximately 100 Native American artists including a variety of Native American art, entertainment and learning opportunities throughout the weekend. A Festival Prelude event will be held on Friday evening, January 11, at The Wigwam. The festival is open on Saturday and Sunday from 10am-5pm. For more information access www.litchfieldparkgathering.com.

January 19
Saturday

Litchfield Park State of the City

Public meeting from 9-11am in Souers Hall at The Church at Litchfield Park located at 300 N Old Litchfield Rd.

January 26
Saturday

Kiwanis Litchfield Park Winter Trout Fishing Derby

Fun family event at Tierra Verde Lake Park from 7:30am-3pm. Registration opens at 6:30am. Great fishing with over 750 lbs. of trout stocked in the lake. There will be food, prizes and giveaways. Must provide your own fishing equipment and bait. *(Small fee of \$6 per pole used or \$4 per pole used for ages 15 & under.)*



January 27
Sunday

Arts in the Park Outdoor Concert Series

Free concert featuring PebbleRock Band on the front lawn of The Wigwam from 3-5pm.

**February 10
Sunday**

Arts in the Park Outdoor Concert Series

Free concert featuring Come Back Buddy on the front lawn of The Wigwam from 3-5pm.



**February 15-17
Friday, Saturday,
Sunday**

Wigwam Festival of Fine Art

Free festival from 10am-5pm each day. Western, Southwest & Native American Fine Art Show presented by Vermillion Promotions.

**February 23
Saturday**

Litchfield Park 10K, 5K, 1 Mile Run/Walk

Benefits Friends of the Rec

Race begins and ends in front of the Litchfield Park Recreation Center. Registration fee includes race t-shirts, raffle prizes, food & drink, and post-race awards ceremonies. All ages and experience levels welcome. (Entry fees: \$20 for 10K, 5K & 1 Mile Competitive; \$10 for Healthy Classroom Challenge.)

**March 1-2
Friday & Saturday**

Litchfield Park Home & Garden Tour

A self-guided tour of historic homes and their gardens. The event includes a car show. Proceeds support the Litchfield Park Historical Society and Museum. Tickets available at lphsmuseum.org.

**March 2-3
Saturday & Sunday**

Litchfield Park Art & Wine Festival

Free event on the Library Lawn & Downtown District. Held Saturday and Sunday from 9am-5pm. Over 200 art booths, Beer & Wine Garden with tastings offered offered by Arizona wineries and microbreweries, plus culinary demonstrations, live music, and great food. Free parking and admission.

**March 17
Sunday**



Arts in the Park Outdoor Concert Series

Free concert featuring the Desert Knights Band on the front lawn of The Wigwam from 4-6pm.

**April 5
Friday**

Arts in the Park Outdoor Concert Season Finale

Free concert featuring Cold Shott and the Hurricane Horns on the front lawn of The Wigwam from 7-9pm.

**April 7
Sunday**

Rotary Taste of the Park Food Festival

Event held in the Downtown District from 11am-5pm. Presented by the Litchfield Park Rotary Club. Contact Cookie Pennella, 602-260-3161 or maryann@cdsdrivers.com



**May 27
Monday**

Memorial Day Ceremony

The City of Litchfield Park will remember the men and women who died while serving in the U. S. Armed Forces. Event begins at 7am in front of WWII Memorial on Litchfield Elementary School Grounds.

**July 4
Thursday**



4th of July "Splash Bash"

Independence Day Pool Party at the Litchfield Park Recreation Center from 10am-5pm. Water games and kids' activities, DJ, pool safety info, and snack bar. Admission is free for pass holders and \$2 per person for all others.



Mindful Recycling Makes a Measurable Difference

by Laila Amerman, Waste Management

When it comes to recycling, going green is great. Striving to be greener is even better.

Last year, Litchfield Park's recycling program diverted approximately 10 percent of the community's overall waste, or 600,000 pounds of materials from going to landfills. This is a commendable feat, but there's potential to recycle so much more. Conservative estimates suggest that 30 percent of the waste stream from homes is recyclable.

Consider if you and your neighbors increase your recycling efforts by 5 percent during 2019 to divert 15 percent of your waste. This would keep an additional 300,000 pounds of material out of landfills and save 720,666 gallons of water, which is enough to meet the daily needs of 9,608 people.

All it takes is a mindful effort. Focus on placing all your empty bottles, cans, paper, and cardboard loosely (not bagged) in your curbside cart. Be sure everyone in your home, including holiday visitors, knows the recycling rules, so all can contribute.

Holiday shopping and shipping offer more opportunities to recycle right. Remember:

- Remove any plastic wrap or foam packing materials before recycling empty cardboard boxes.
- Return plastic bags to a grocery store for recycling or reuse them on your next trip. Keep plastic bags and bagged materials out of your curbside cart.

It all adds up. Interested in recycling but not sure where to start? Choose one household item to recycle – something you dispose of frequently. For example, commit to recycle all your plastic water bottles or every metal soup can.

Every one of us makes a difference when we recycle an aluminum can, plastic bottle, cardboard box, or yesterday's newspaper. If we all become mindful and recycle a little bit more in 2019, it will make a measurable difference for the entire community. Waste Management appreciates the opportunity to be a part of your community. Together, we can accomplish great things.

For more information, visit: <https://recycleoftenrecycleright.com>.

Look. Listen. Learn.

by Tanja Tanner, City of Goodyear Community Education Coordinator

Today's home fires burn faster than ever. In a typical home fire, you may have as little as one to two minutes to escape safely from the time the smoke alarm sounds. Knowing how to use that time wisely takes planning and practice.

The Goodyear Fire Department is teaming up with the National Fire Protection Association (NFPA)—the official sponsor of Fire Prevention Week™ for more than 90 years—to promote this year's Fire Prevention Week campaign: *Look. Listen. Learn. Be aware. Fire can happen anywhere™*, which works to educate the public about basic but essential ways to quickly and safely escape a home fire.

NFPA statistics show that the number of U.S. home fires has been steadily declining over the past few decades. However, the death rate per 1000 home fires that are reported to fire departments was 10 percent higher in 2016 than in 1980.

LOOK for places fire could start. Take a good look around your home. Identify potential fire hazards and address them. If necessary, have a qualified professional correct hazards.

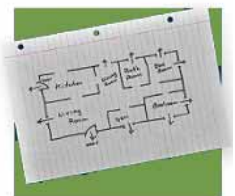
LISTEN for the sound of the smoke alarm. You could have only minutes to escape safely once the smoke alarm sounds. Go to your outside meeting place, which should be a safe distance from the home and where everyone should meet.

LEARN two ways out of every room. Make sure all doors and windows leading outside open easily and are free of clutter.

Working Smoke Alarms Save Lives

- Smoke alarms detect and alert people to a fire in the early stages. Smoke alarms can mean the difference between life and death in a fire.
- Working smoke alarms cut the risk of dying in a home fire in half.
- Install smoke alarms in every sleeping room, outside each separate sleeping area, and on every level of the home, including the basement.
- Test smoke alarms at least once a month using the test button.
- Make sure everyone in the home understands the sound of the smoke alarm and knows how to respond.

LOOK. LISTEN. LEARN. **BE AWARE!** Fire can happen anywhere.



Beautification Committee Selects Yard of Quarter Winner

Congratulations! Jimmie & Christa Duncan, 905 E. Campina Lane



Water in the Southwest Valley

We know it's a precious resource that requires thoughtful management and conservation, especially in our desert landscape. At the same time, we trust it will flow from our faucets as needed. How is it that we can rely on access to water in spite of living in a desert? The answer is location, location, location.

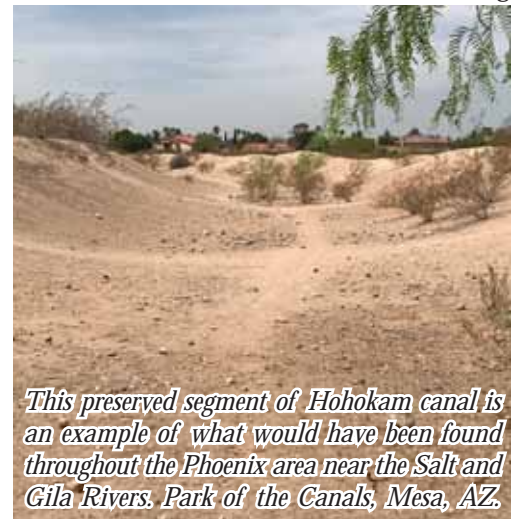
In the Southwest Valley, we're in a unique geographic environment. Nearby, we have a confluence of three rivers: the Salt, the Gila, and the Agua Fria. In addition, unique geologic events millions of years ago helped form vast underground aquifers. Together, these factors have made this area a natural location of human activity for thousands of years.

Many of us may have learned about the Hohokam. They were prehistoric people with a highly developed agricultural society who engineered an extensive canal irrigation system along the rivers of central and southern Arizona. From approximately 1-1450 AD their culture thrived, but by the time the first Europeans arrived about 100 years later, they had seemingly disappeared. Locally, evidence of their civilization has been uncovered in the White Tank Mountains and along the Agua Fria River between Lake Pleasant and the base of the Estrellas. But even more ancient groups have been active in our part of the Valley because of water.

Recent archeological finds near Luke Air Force Base have shown evidence of human activity, which predates the Hohokam as far back as 7,000 BC. It's thought a high water table and a marsh-like habitat held a greater variety of vegetation, which attracted people to the area.

The fact that the Southwest Valley is a place where water has been accessible and managed for millennia is just one piece of a multifaceted topic which will be explored in an upcoming exhibit at the Litchfield Park Historical Society Museum.

Opening Sunday, November 11th, 2018 "Water: The Evolution of a Resource" examines the impact of natural occurrences and human activity on our water. It takes a look at the role of Arizona's waterways in exploration, transportation, and settlement, the impact of cycles of flood and drought, major water projects, and current issues regarding consumption, management, cleanup, and restoration. The exhibit will be on display until October 2019. A program of events will be scheduled to accompany the exhibit during its run.



This preserved segment of Hohokam canal is an example of what would have been found throughout the Phoenix area near the Salt and Gila Rivers. Park of the Canals, Mesa, AZ.

Household Waste Event

Saturday, November 3, 2018 from 8am-12pm



The City of Litchfield Park is partnering with the City of Goodyear to sponsor a Household Waste Event on Saturday, November 3, 2018.

- No material will be accepted **AFTER** 12pm.
- Residential only; commercial and industrial waste will **NOT** be accepted.
- Proof of residency is required in the form of a utility bill, driver's license, etc.; open to 'The City of Litchfield Park' residents only, not Maricopa County residents.
- Materials should be tightly sealed in their original containers.
- Items with glass should be wrapped to avoid breakage.
- Material should be transported in a cardboard box in the vehicle trunk or truck bed.
- Personnel will be available to identify and unload materials.
- Residents are encouraged to consolidate hazardous waste for fewer vehicles dropping off items.

For further information contact

City of Litchfield Park, Public Works Department
623-935-1066 Ext 110

Location

Goodyear Public Works Facility
4971 S. 157th Avenue, Goodyear, AZ 85338

Stop Unwanted Handbills & Uninvited Newspapers

In accordance with **Ordinance 99-50**, the City provides residents with the opportunity to be officially registered to stop delivery of handbills and uninvited newspapers. If you have previously registered, your registration will **automatically expire on January 31, 2019. Annual renewal is required.** Visit our website at www.litchfieldpark.org and navigate to Live > City Services > City Clerk > Handbills Register List > Request to Stop Delivery of Handbills and Uninvited Newspapers. Submit your completed form via fax 623-935-5427 or mail or hand deliver to City of Litchfield Park, 214 W Wigwam Boulevard, Litchfield Park, Arizona, 85340. All registrations must be in writing with an authorized signature.

SHOP THE PARK

DOWNTOWN

Wigwam Boulevard & Old Litchfield Road

Dining

Litchfield's Wigwam	623 935-3811
Old Pueblo Café	623 935-5059
Papa Paul's Brick Oven Pizza & Pasta	623 215-6850
Park Café	623 535-6661
Red's Bar & Grill Wigwam	623 856-1094
Ribbons Tea House	623 536-8119
The Lazy Palm Sports Grill	623 518-6388
The Litchfield Taproom	623 536-4804

Service Providers

Charity Realty	623 258-0272
Ellsworth & Warren Family Dentistry	623 935-9376
Fringe Salon	623 935-0505
King Enterprises	623 935-5101
LeMonds — Aveda Salon and Spa Wigwam	623 535-4967
Litchfield Elementary School District #79	623 535-6000
Litchfield Park Cross Fit	623 695-6449
Litchfield Park Old Fashion Barber Shop	623 535-0300
Morrisette Martial Arts	623 935-0400
Smith Law Offices	623 935-2870
St. Peter's Montessori School	623 935-7737
The City of Litchfield Park Preschool	623 935-9040
Tri West Realty	623 536-9378
Wigwam Resort	623 935-3811
Wigwam Golf	623 935-9414

LA LOMA MEDICAL PLAZA

LA LOMA VILLAGE – SENIOR LIVING

Litchfield & Camelback

Health & Well-Being Providers

Academic Urology & Urogynecology of Arizona	623 547-2600
Clear Sky Dermatology	623 219-4777
Gibbs & Martin Dentistry	623 535-5488
Lab Corp	623 536-7477
Litchfield Dental Care	623 547-0307
Pinnacle Family Medicine	623 935-9600
Vein Envy, LLC	623 233-1050

La Loma Village

La Loma Health Care Center	623 537-7400
La Loma Community	623 537-7500

Holiday Lights Tour

In addition to our regular contest, you can be included on our non-competitive, City-wide Holiday Lights Tour. If you would like to have your home listed on the tour, please complete the entry form and select the "Holiday Lights Tour (non-competitive)" checkbox. The Holiday Lights Tour listing will be available online until Tuesday, January 1, 2019.

LITCHFIELD MARKETPLACE

Litchfield & Camelback

Dining

Hot Bagels & Deli #1	623 243-9071
Jack in the Box	623 594-4273
Little Caesars Pizza	623 594-8312
Panda Express	623 536-1016
Starbucks Coffee	480 285 8886
Times Square Italian Restaurant	623 322-7437

Service Providers

Ace Hardware	623 535-1303
Cute-icle Nails Spa by Kelly	623 536-1994
Fry's Fuel Center	623 334-7735
Fry's Marketplace	623 334-7735
MedPost Urgent Care	928 323-8112
Oasis Dental Spa	480 822-7659
Pet Planet	480 924-2347
Supercuts	623 935-3112
The Little Clinic <i>Fry's</i>	623 334-7745

MONUMENT POINT

El Mirage & Camelback

Dining

Burger King	623 849-1900
-------------	--------------

Service Providers

Christian Brothers Automotive	623 252-9512
Caliber Collision	623 230-2175

PLAZA IN THE PARK

Litchfield & Camelback

Dining

Ground Control	623 535-9066
La Loma Mexican Grille	623 935-0981

Service Providers

Banner Health Clinic	623 474-8370
Carin Nguyen, PLLC	623 223-1663
Core Body Pilates West Valley	623 285-5462
CVS / Pharmacy	623 547-4799
Edward Jones Investments	623 935-3959
Fit Body Boot Camp	623 536-2537
Full House Realty	623-229-4588
Glamor Nails & Spa	623 536-3330
Litchfield Center for Restorative Dentistry	623 935-5055
Litchfield Park Pool Service & Supply	623 935-5121
Little Sunbeams Preschool	623 935-0422
Moody's Smoke Shop	623 535-1010

Real Aztate	623 223-1663
Share More Smiles Orthodontics	623 547-2022
Studio of Styles AR	623 547-1849
The Beauty Box	623 535-3893
Valley Evaluation Centers	602 448-4655
Wee Care Corporation	623 935-6040

WIGWAM CREEK SHOPPING CENTER

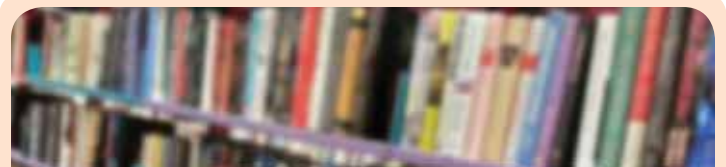
Indian School and Dysart

Dining

Baskin Robbins	623 535-4488
China Red Café	623 535-7599
KFC	623 535-5528
McDonald's	623 935-7710
Señor Taco	623 935-0343
Subway	623 536-9401
Teacup	623 236-3006

Service Providers

Albertsons	623 535-7991
Anytime Fitness	623 935-2737
Compass Bank	623 547-2440
Cowtown Skateboards	623 536-2345
Embassy Tanning	623 935-0021
Fantastic Sams	623 535-3989
Goodyear Tire & Auto Service Center	623 536-0613
Hacienda Del Rey, MBK Senior Living	623 498-8682
J's Barber Shop	623 935-3525
Leslie's Swimming Pool Supplies	623 547-3807
O'Reilly Auto Parts	623 536-0490
Osco Pharmacy <i>Albertsons</i>	623 535-7153
Sun West Nails	623 547-3844
US Bank <i>Albertsons</i>	623 536-2407
Valero Corner Store & Fuel Station	623 935-6611
Wigwam Creek Dental Care	623 547-0010



Library Book Sale

The Friends of the Litchfield Park Library will hold a one-day used book sale in the library's Community Room from 9am to 4pm on Saturday, November 3, 2018. All profits are donated to the library to fund programs for children and adults. Donations of gently-used books and electronics are welcome and can be dropped off at the library prior to Friday, November 2, 2018. Call Susan at 623-935-4403 if you have any questions concerning the sale. Please support the Litchfield Park Library. *See you in November!*

ALERT! Your City Newsletter

*Sponsored by: Liberty Utilities, The Wigwam,
Waste Management*

Did you know?



Recycling plastic water bottles saves 84% of the energy needed compared to using raw plastic material.



RECYCLE OFTEN.
RECYCLE RIGHT.